



ProJet CJP 660Pro

Net Build Volume (xyz)*	10 x 15 x 8 in (254 x 381 x 203 mm)
Color	Full CMYK
Pastel or Vibrant Color Option	•
Resolution	600 x 540 DPI
Layer Thickness	0.004 in (0.1 mm)
Minimum Feature Size	0.02 in (0.5 mm)
Max. Vertical Build Speed	1.1 in/hour (28 mm/hour)
Draft Printing Mode (Monochrome)	•
Prototypes per Build**	36
Number of Jets	1520
Number of Print Heads	5
Build Material	VisiJet PXL
Automated Setup and Self Monitoring	•
Material Recycling	•
Automatic Build Platform Clearing	•
Part Cleaning	Integrated
Integrated Materials	•
Intuitive Control Panel	•
Input Data File Formats Supported	
Client Operating System	Windows [®] 7 & Vista [®]
Operating Temperature Range	55-75°F (13 - 24 °C)
Operating Humidity Range	20-55% - non-cond.
Dimensions (WxDxH)	
3D Printer Crated	86 x 48 x 63 in (218 x 122 x 160 cm)
3D Printer Uncrated	76 x 32 x 57 in (193 x 81 x 145 cm)
Weight	
3D Printer Crated	1116 lbs (507 kg)
3D Printer Uncrated	750 lbs (340 kg)
Electrical	100-240V, 15-7.5A
Noise	
Building	57 dB
Core Recovery	66 dB
Vacuum (open)	86 dB
Fine Decoring	80 dB
Certifications	CE, CSA

* Maximum part size is dependent on geometry, among other factors.

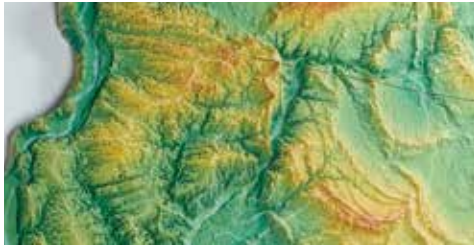
** Based on baseball-size geometry.

Visijet® PXL Material

With Visijet PXL composite for the ProJet CJP x60 printer series, choose from a range of finishing options to meet your needs, from ColorBond infiltration for stronger functional prototypes to wax for creating concept models quickly, safely and affordably.



Photo courtesy of WhiteClouds



MATERIAL	Condition	Visijet PXL	Visijet PXL	Visijet PXL	Visijet PXL
Infiltrant		ColorBond™	StrengthMax™	Salt Water Cure™	Wax
Composition		Visijet PXL + One-part, fast acting adhesive infiltrant	Visijet PXL + Two-part, high strength epoxy infiltrant	Visijet PXL + Eco-friendly and safe salt and water infiltrant	Visijet PXL + Eco-friendly and safe wax infiltrant
Tensile Strength*	ASTM D638	14.2 MPa	26.4 MPa	2.38 MPa	9.2 MPa
Elongation at Break*	ASTM D638	0.23 %	0.21 %	0.04 %	0.09 %
Flexural Strength*	ASTM D790	31.1 MPa	44.1 MPa	13.1 MPa	11.7 MPa
Flexural Modulus*	ASTM D790	7163 MPa	10680 MPa	6355 MPa	4833 MPa
Modulus of Elasticity*	ASTM D638	9450 MPa	12560 MPa	12855 MPa	22570 MPa
Description		Quick-cure infiltrant, ideal for color models to improve strength and color vibrancy. The most popular solution.	Two-part epoxy infiltrant, ideal for functional models to dramatically improve the strength.	For monochrome models only. Provides sufficient strength for safe handling and is very economical.	Ideal for fast, affordable, color models. Sufficient strength and smooth surface finish.

* Requires 24 hrs of drying time @ 100 °F (37.8 °C)

DISCLAIMER: It is the responsibility of each customer to determine that its use of any Visijet® and infiltrant materials is safe, lawful and technically suitable to the customer's intended applications. The values presented here are for reference only and may vary. Customers should conduct their own testing to ensure suitability for their intended application.

USA
Tel: +1 803 326 3900

**Germany, Scandinavia,
Eastern Europe, Middle East**
Tel: +49 6151 357 0

UK
Tel: +44 1442 282 600

Asia-Pacific
Melbourne Tel: +61 3 9819 4422
Sydney Tel: +61 2 9516 5571

www.3dsystems.com

Warranty/Disclaimer: The performance characteristics of these products may vary according to product application, operating conditions, material combined with, or with end use. 3D Systems makes no warranties of any type, express or implied, including, but not limited to, the warranties of merchantability or fitness for a particular use.

© 2017 by 3D Systems, Inc. All rights reserved. Specifications subject to change without notice. The 3D Systems logo, ProJet and Visijet are registered trademarks and ColorBond, StrengthMax, and Salt Water Cure are trademarks of 3D Systems, Inc.